

VISION:

" To be one of the leading energy suppliers in the world through best practices from mine to market "



MAHANADI COALFIELDS LIMITED

ACHIEVEMENTS FY 2019-20



www.mahanadicoal.in



<https://www.facebook.com/mahanadicoal>



twitter.com/mahanadicoal

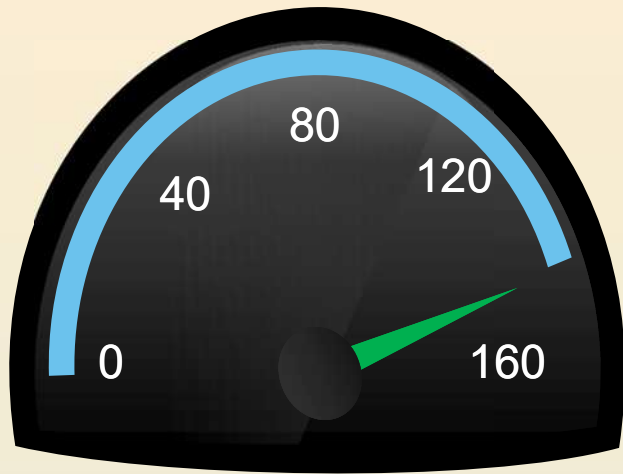
COAL PRODUCTION						
Sub. Comp.	TARGET	ACH.	% ACH	GROWTH		TPD
Units	MT		%	MT	%	IN 000'TE
ECL	53.5	50.41	94%	0.25	0.5%	138
BCCL	36.0	27.73	77%	-3.31	-10.7%	76
CCL	77.0	66.89	87%	-1.83	-2.7%	183
NCL	106.25	108.05	102%	6.55	6.5%	295
WCL	56.0	57.64	103%	4.46	8.4%	157
SECL	170.5	150.55	88%	-6.8	-4.3%	411
MCL	160.0	140.36	88%	-3.79	-2.6%	383
NEC	0.75	0.52	69%	-0.27	-34%	1
CIL	660	602.14	91%	-4.75	-0.8%	1645

OFFTAKE						
Sub. Comp.	TARGET	ACH.	% ACH	GROWTH		TPD
Units	MT		%	MT	%	IN 000'TE
ECL	53.5	49.28	92%	-1.13	-2.2%	135
BCCL	36.0	28.75	80%	-4.32	-13.1%	79
CCL	77.0	67.16	87%	-1.28	-1.9%	183
NCL	106.25	107.42	101%	5.84	5.8%	293
WCL	56.0	52.58	94%	-2.98	-5.4%	144
SECL	170.5	141.97	83%	-14.06	-9%	388
MCL	160.0	134.01	84%	-8.3	-5.8%	366
NEC	0.75	0.56	75%	-0.19	-25.4%	2
CIL	660	581.73	88%	-26.41	-4.3%	1589

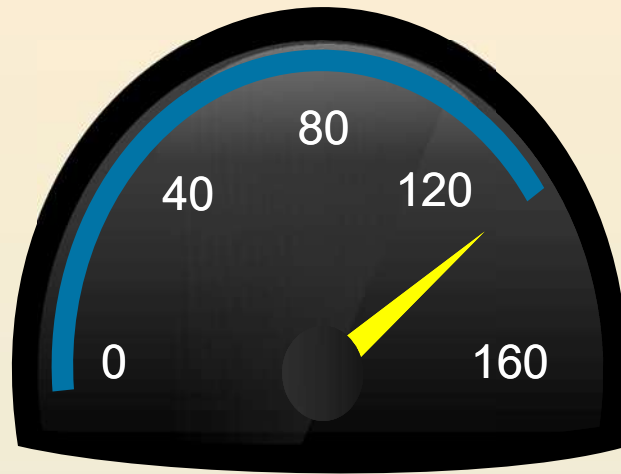
OVER BURDEN REMOVAL						
Sub. Comp.	TARGET	ACH.	% ACH	GROWTH		CPD
Units	M. Cum		%	M. Cum	%	IN 000' cum
ECL	155	140.43	91%	14.37	11.4%	384
BCCL	125	83.28	67%	-19.96	-19.3%	228
CCL	108	103.37	96%	2.88	2.9%	282
NCL	362	323.76	89%	5.53	1.7%	885
WCL	219	210.66	96%	18.63	9.7%	576
SECL	268	164.79	61%	-18.65	-10.2%	450
MCL	160	124.51	78%	-5.49	-4.2%	340
NEC	10	4.75	48%	-3.75	-44.1%	13
CIL	1407	1155.55	82%	-6.44	-0.6%	3157

CIL'S PERFORMANCE AT A GLANCE

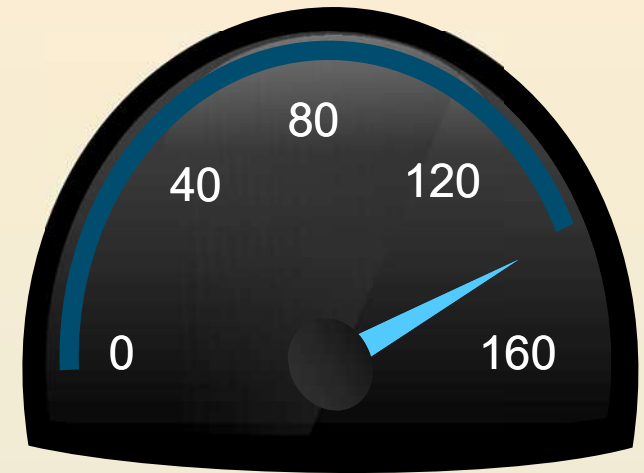
MCL'S PERFORMANCE AT A GLANCE



COAL - 140.36 MT



OBR – 124.51 M.cum



OFFTAKE – 134.01 MT

COAL PRODUCTION



1

19.25 MT in March'20 – Highest ever in the history of MCL in a single month with Avg of 6.21 lakh te/day against last year Avg of 5.83 lakh te/day

2

10.82 lakhs Te in a single day on 30th March which is highest ever in the history of CIL.

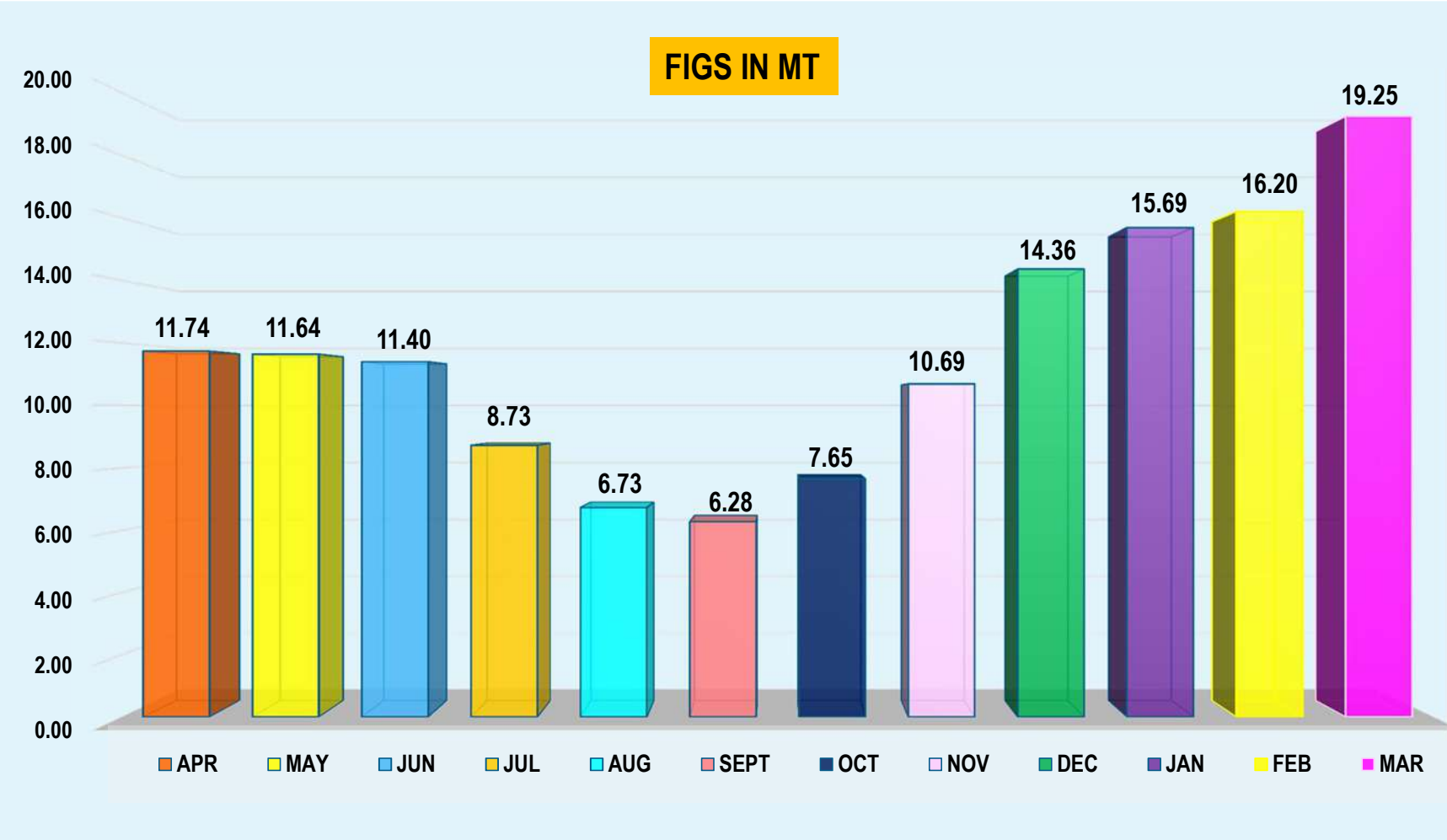
3

65.51 MT in the last 4 months of FY 19-20 which is highest ever in MCL's history with an Avg of 5.37 lakhs te/day against last year average of 4.86 lakh te/day.

4

129.1 MT (92%) through Ecofriendly Surface Miner.

COAL PRODUCTION MONTHWISE IN FY 19 -20



OB REMOVAL

1

16.37 MCum in March'20 – Highest ever in the history of MCL in a single month with Avg of **5.28 lakh Cum/day** against last year Avg of **4.32 lakh Cum/day**

2

62.7 M.Cum highest ever in the history of MCL in last 4 months of FY 19-20 with average of **5.14 Lakhs cum/day** against last year avg. of **4.17 lakh cum/day**.

3

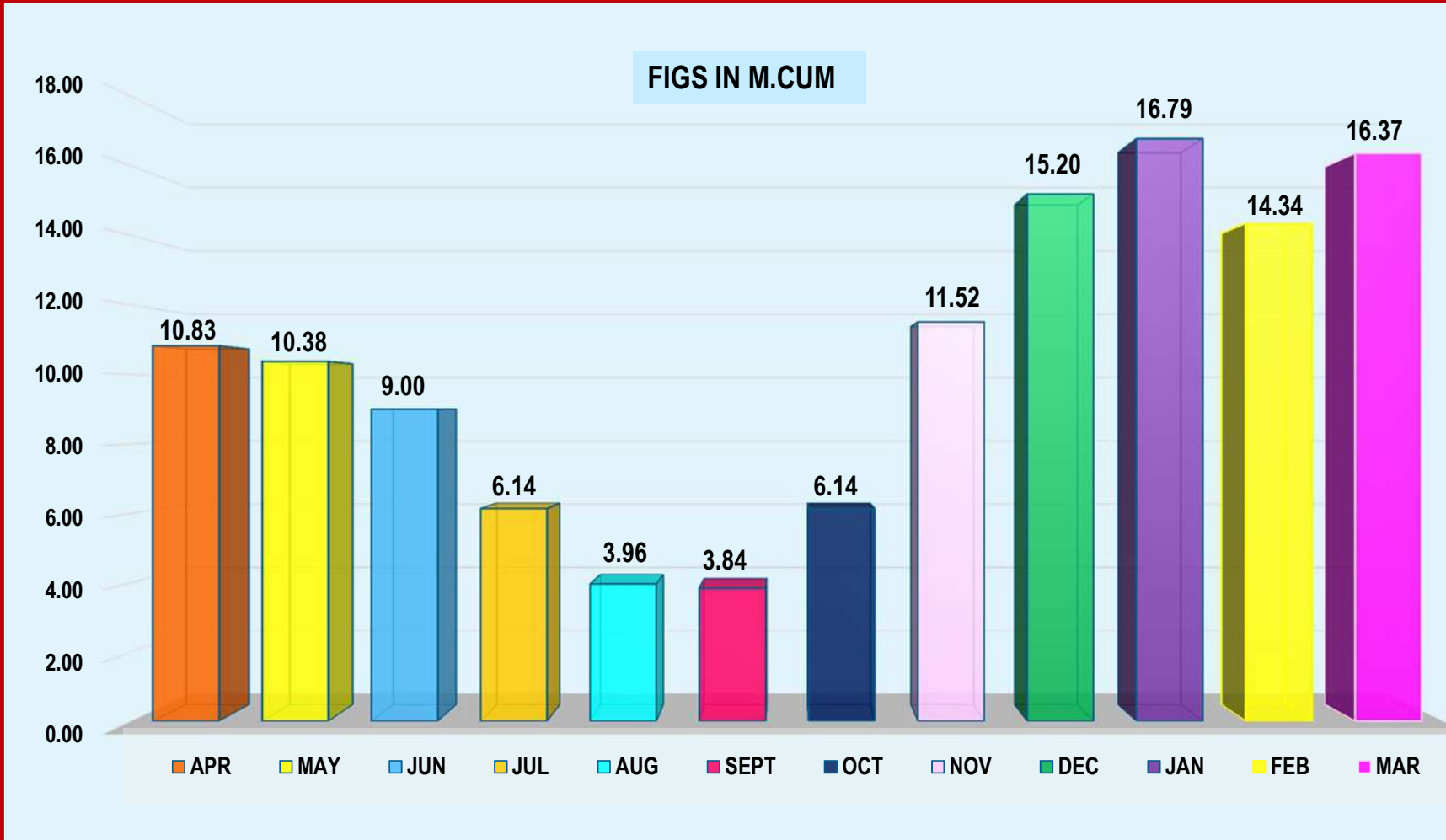
6.63 Lakh cum in a single day on **22nd January** which is highest ever in MCL's history.

4

Highest ever OB removal in the history of MCL in a single month **16.79 M.cum** in **Jan '20** with an average of **5.42 Lakh cum/day**.



OB REMOVAL MONTHWISE IN FY 19 -20



OFFTAKE



1

52.1 MT offtake highest ever in the history of MCL in last 4 months with an average of **4.27 lakhs te/day**.

2

Highest offtake among all subsidiaries through **eco-friendly modes - 74%**.

3

Lingaraj & Chharla Siding operationalized. **Lingaraj SILO** commissioned

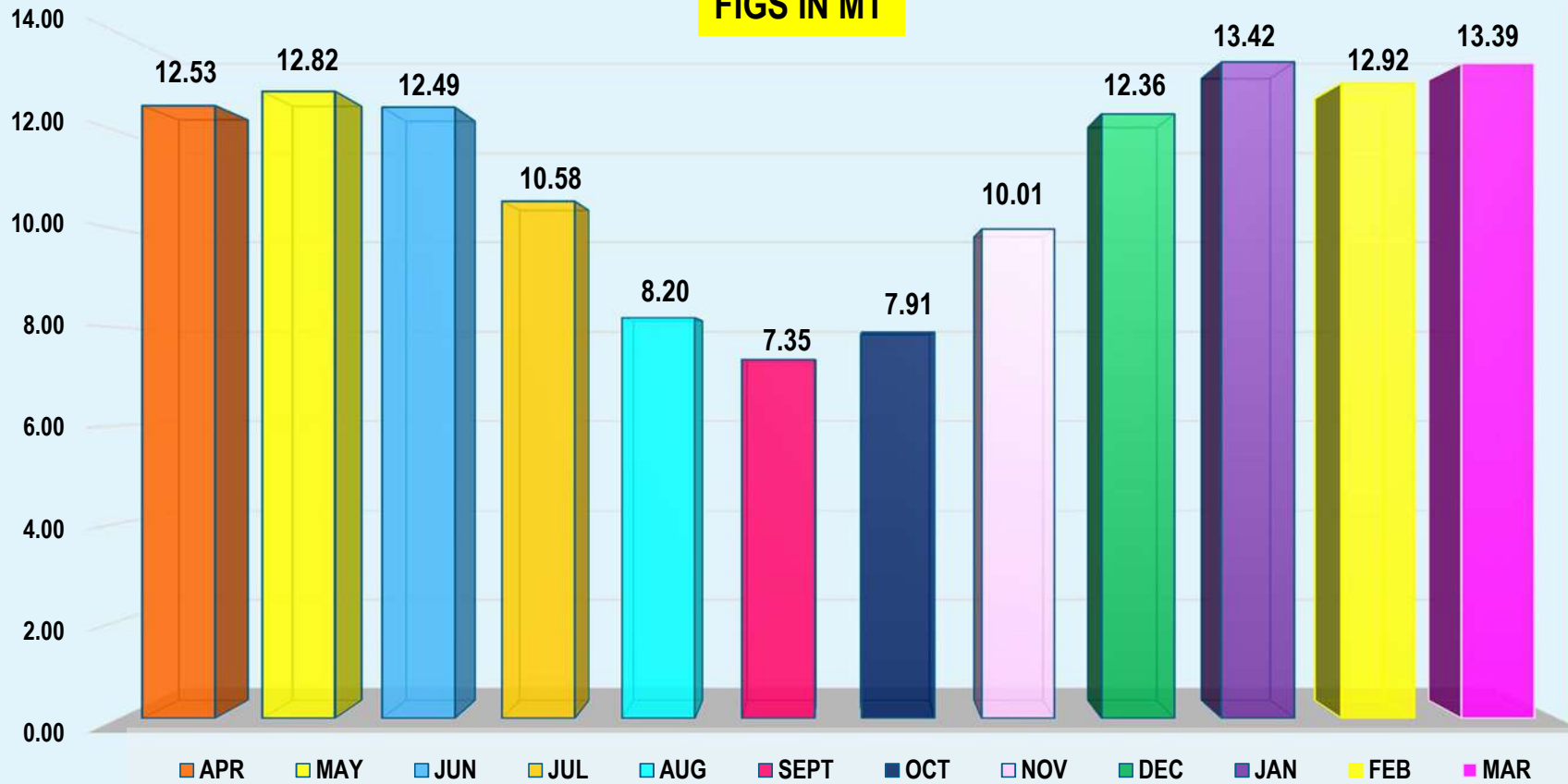
4

Coal Corridor operationalized at Hingula & **4 Underpasses** operationalized.

OFFTAKE MONTHWISE IN FY 19 -20



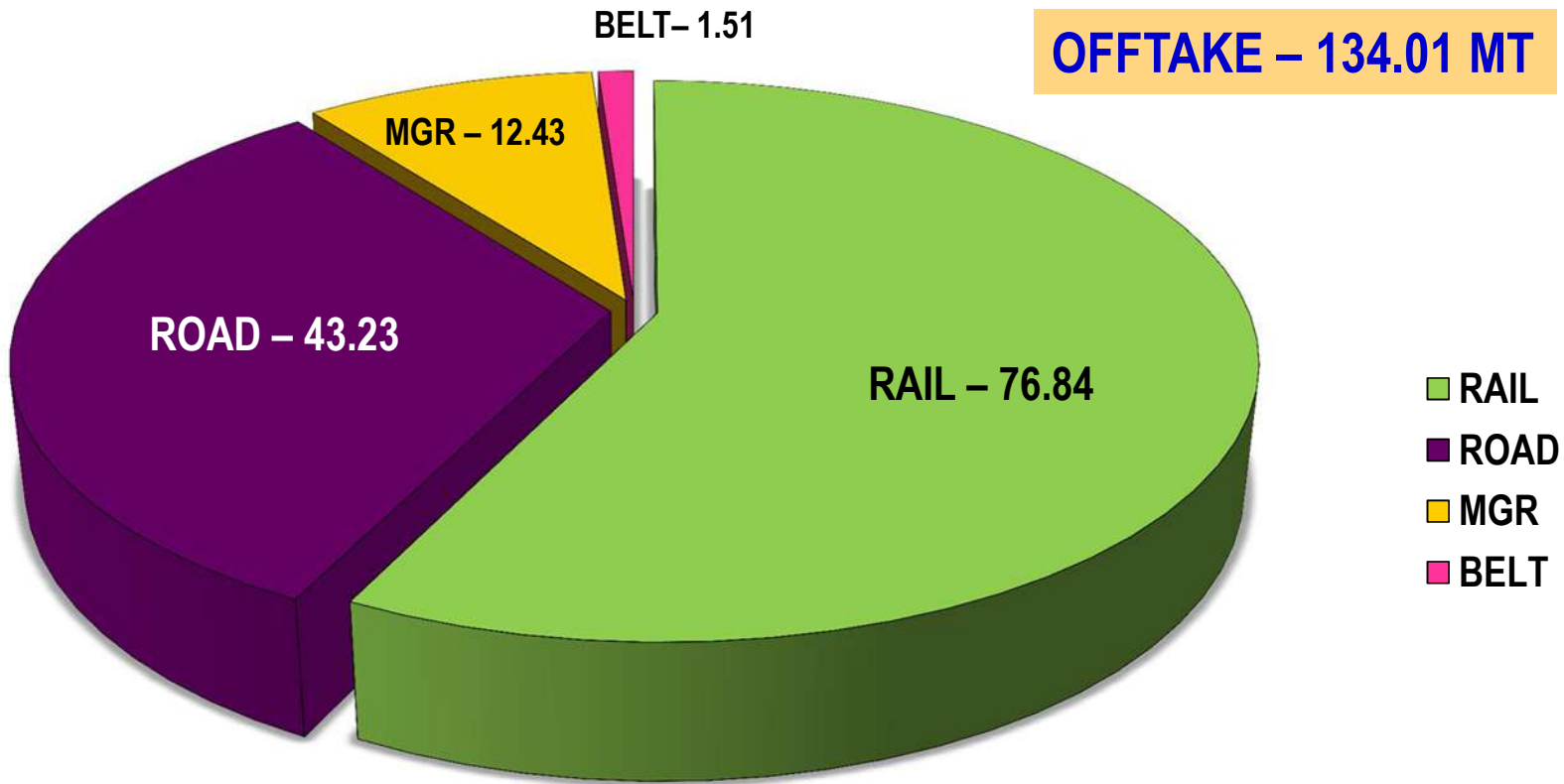
FIGS IN MT



OFFTAKE MODE-WISE IN FY 19 -20



OFFTAKE – 134.01 MT



OFFTAKE MODEWISE DISTRIBUTION Figs in MT

Mine-wise Coal Production in FY 19 -20

Figs in MT

Mine	Tgt	April	May	June	July	Aug	Sept	Oct	Nov	Dec	Jan	Feb	March	Total
Jagannath	6	0.24	0.17	0.18	0.16	0.04	0.12	0.14	0.32	0.42	0.37	0.61	0.69	3.45
Ananta	10	0.75	0.74	0.91	0.72	0.80	0.80	0.84	0.95	1.06	1.13	1.04	1.20	10.93
Bhubaneswari	28	2.22	2.47	2.14	1.45	1.62	1.56	2.05	2.54	2.77	3.06	3.06	3.06	28.00
Bharatpur	15	0.67	0.69	0.84	0.46	0.00	0.01	0.09	0.17	0.33	0.38	0.39	0.73	4.78
Lingaraj	15	1.20	1.12	1.13	0.72	0.50	0.51	0.85	1.23	1.51	1.63	1.70	1.90	14.01
Kaniha	10	0.52	0.62	0.60	0.40	0.27	0.25	0.46	0.51	0.85	0.90	0.98	1.18	7.53
Hingula	10	0.46	0.43	0.31	0.18	0.19	0.18	0.31	0.66	1.06	0.94	0.88	0.99	6.58
Balram	4.5	0.59	0.44	0.47	0.18	0.18	0.21	0.12	0.17	0.48	0.60	0.80	0.98	5.23
Talcher UG	0.11	0.01	0.01	0.01	0.01	0.01	0.01	0.01	0.01	0.01	0.01	0.01	0.01	0.09
Lajkura	4.5	0.34	0.36	0.29	0.33	0.36	0.34	0.30	0.17	0.16	0.04	0.05	0.12	2.84
Samaleswari	9	0.75	0.72	0.74	0.57	0.30	0.18	0.17	0.18	0.18	0.23	0.21	0.37	4.61
Belpahar	6	0.49	0.59	0.63	0.51	0.33	0.43	0.48	0.52	0.55	0.62	0.69	1.67	7.51
Lakhanpur	21	1.71	1.70	1.68	1.65	1.18	0.90	0.79	1.53	2.54	2.74	2.54	2.03	21.00
Basundara(W)	1.1	0.15	0.14	0.18	0.13	0.14	0.15	0.13	0.12	0.15	0.14	0.17	0.22	1.82
Kulda	14	1.07	1.00	0.84	0.88	0.45	0.37	0.51	1.16	1.53	1.80	1.78	2.23	13.63
Garjanbahal	5	0.50	0.37	0.40	0.29	0.30	0.20	0.35	0.39	0.71	1.03	1.24	1.81	7.59
Orient UG	0.79	0.06	0.06	0.06	0.06	0.06	0.06	0.06	0.06	0.06	0.07	0.06	0.07	0.75
Total M C L	160	11.74	11.64	11.40	8.72	6.73	6.28	7.65	10.69	14.36	15.69	16.20	19.25	140.36

Mine-wise OBR in FY 19 -20

Figs in M.Cum

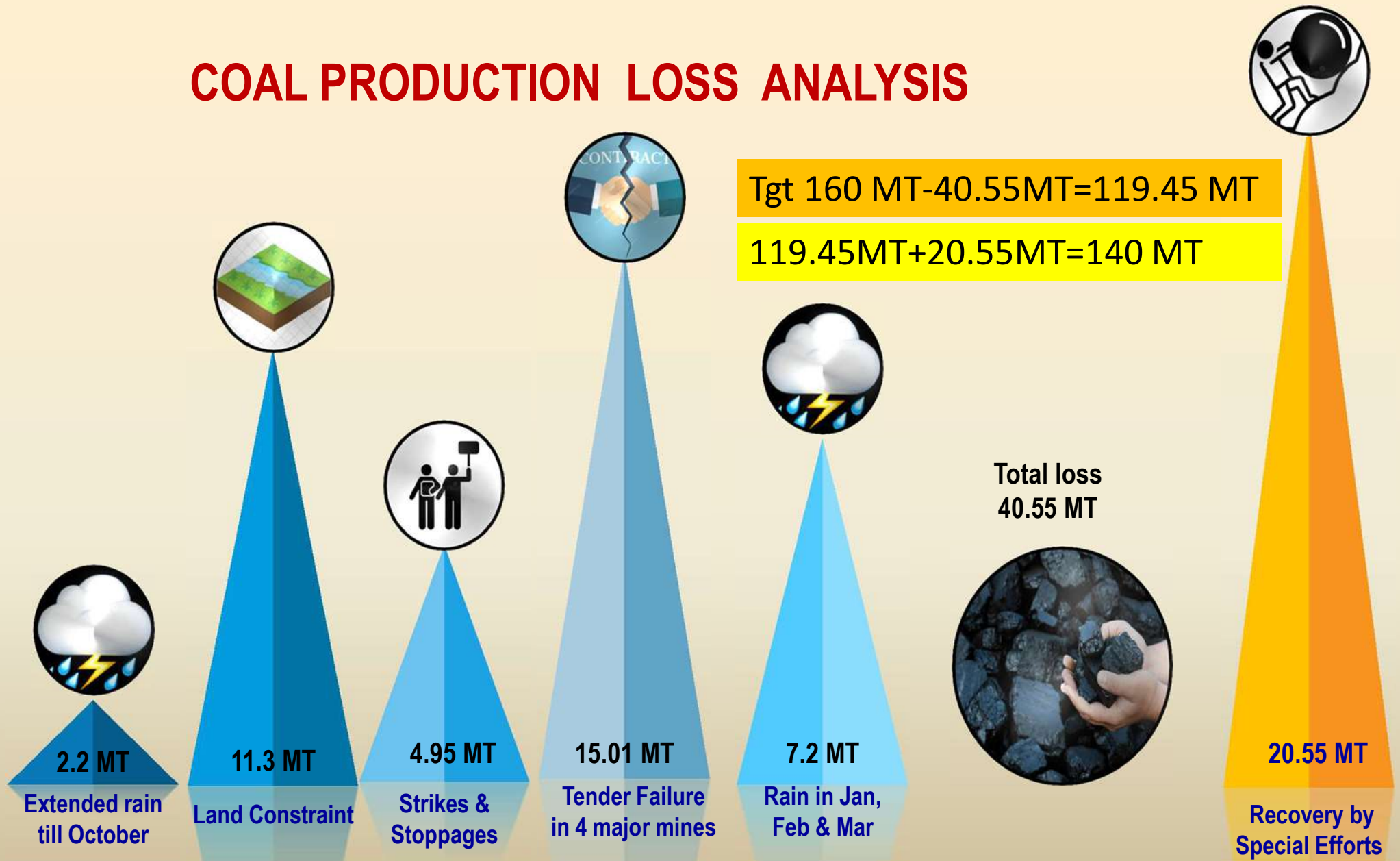
Projects	Tgt	April	May	June	July	Aug	Sept	Oct	Nov	Dec	Jan	Feb	March	Total
Jagannath	3.2	0.16	0.18	0.16	0.10	0.07	0.05	0.05	0.19	0.19	0.24	0.30	0.40	2.11
Ananta	15.0	1.28	1.26	1.25	0.78	0.63	0.62	0.83	1.21	1.35	1.40	1.13	1.14	12.87
Bhubaneswari	16.8	1.02	0.75	0.56	0.64	0.19	0.37	0.87	2.02	2.14	2.26	1.90	2.32	15.07
Bharatpur Area	13.5	0.87	0.98	0.81	0.55	0.16	0.18	0.18	0.60	0.76	0.80	0.34	0.28	6.51
Lingaraj Area	13.4	1.03	1.04	1.02	0.72	0.59	0.58	0.86	1.03	1.13	1.59	1.13	1.39	12.10
Kaniha Area	6.7	0.23	0.39	0.29	0.21	0.00	0.12	0.17	0.25	0.41	0.43	0.44	0.44	3.37
Hingula	5.0	0.24	0.34	0.23	0.22	0.11	0.07	0.18	0.61	0.82	0.78	0.64	0.67	4.90
Balram	9.9	0.64	1.01	0.77	0.51	0.46	0.52	0.40	0.54	1.14	1.05	1.34	1.58	9.97
Lajkura	11.3	0.66	0.64	0.67	0.55	0.43	0.32	0.07	0.30	0.14	0.10	0.13	0.28	4.29
Samaleswari	10.8	0.42	0.55	0.29	0.16	0.09	0.08	0.10	0.13	0.40	0.75	0.60	0.82	4.39
Belpahar	9.6	0.59	0.58	0.60	0.42	0.39	0.20	0.42	0.74	1.08	0.87	0.73	0.63	7.24
Lakhanpur	32.7	2.81	1.91	1.72	0.94	0.60	0.52	1.51	2.84	4.13	4.57	3.92	4.39	29.86
Basundara(W)	0.2	0.03	0.03	0.01	0.04	0.02	0.03	0.05	0.02	0.01	0.00	0.03	0.03	0.32
Kulda	9.4	0.68	0.62	0.53	0.18	0.14	0.11	0.31	0.78	1.01	1.32	1.20	1.46	8.34
Garjanbahal	2.5	0.15	0.10	0.09	0.13	0.08	0.08	0.12	0.25	0.49	0.62	0.53	0.53	3.17
Total M C L	160	10.83	10.38	9.00	6.14	3.96	3.84	6.14	11.51	15.20	16.79	14.34	16.37	124.51

Area-wise Off-take FY 19 -20

Figs in MT

Name of Area	Tgt	April	May	June	July	Aug	Sept	Oct	Nov	Dec	Jan	Feb	March	Total
Jagannath Area	44	3.28	3.34	3.34	2.67	2.45	2.77	3.20	4.06	4.44	4.26	4.25	4.38	42.42
Bharatpur Area	15	0.89	0.85	0.86	0.57	0.01	0.02	0.10	0.15	0.29	0.29	0.36	0.36	4.73
Lingaraj Area	15	1.33	1.28	1.25	0.84	0.63	0.79	0.95	1.13	1.19	1.34	1.24	1.34	13.31
Kaniha Area	10	0.65	0.69	0.62	0.39	0.27	0.24	0.46	0.48	0.69	0.86	0.80	0.83	6.97
Hingula Area	14.5	0.83	1.10	1.20	0.76	0.83	0.56	0.32	0.49	0.89	1.15	0.96	0.99	10.09
Talcher Area	0.11	0.01	0.01	0.01	0.01	0.00	0.01	0.00	0.01	0.01	0.01	0.01	0.00	0.08
IB-Valley Area	13.5	1.24	1.15	1.05	1.04	0.73	0.52	0.47	0.35	0.34	0.23	0.21	0.31	7.64
Lakhanpur Area	27	2.50	2.60	2.42	2.52	1.81	1.55	1.35	1.75	2.39	2.71	2.66	2.99	27.24
Bas. & Garj. Area	20.1	1.78	1.76	1.67	1.69	1.40	0.83	0.99	1.56	2.05	2.52	2.46	2.15	20.85
Orient Area	0.79	0.03	0.05	0.07	0.10	0.08	0.07	0.06	0.03	0.07	0.05	0.03	0.03	0.68
Total M C L	160	12.53	12.82	12.49	10.58	8.20	7.35	7.91	10.01	12.36	13.42	12.98	13.39	134.01

COAL PRODUCTION LOSS ANALYSIS





**157 Crores spent –
100 % achievement**



**22 lakh units generated from
2 MWp Solar Plant - highest
in CIL**



**Surface Miner
procured in 6 days-
record time**



**SIARMAL 50 MTPA
Tender Floated**



**Xcentric Ripper for blastfree OBR
–Tender Floated**



**Lingaraj SILO constructed
& Commissioned.**



**Fog Cannons introduced
in every mine : Fixed and
Mobile**

MCL EXTENDS SUPPORT TO GOVT OF ODISHA FOR FIGHT AGAINST COVID-19

- ❖ MCL signed a Tripartite Agreement with Govt. of Odisha and SUM hospital on **26 March 2019** for setting up of a **500 bedded COVID Hospital** with **25 ICU** and critical care units at **Bhubaneswar** which was inaugurated on **6th April**.
- ❖ A **150 bedded COVID hospital** at Talcher was also set up under the same Agreement and inaugurated on **20th April**.
- ❖ **Dedicated COVID Health Center** - Lakhanpur (**50 beds**) , Central Hospital IB valley (**4 beds**), Basundhara Hospital (**2 beds**)
- ❖ **5 Nos. of ICU ventilators** being procured by MCL at Jharsuguda.





MCL EXTENDS SUPPORT AGAINST COVID-19

- ❖ About **1,35,816 masks** and **3,884 litres of hand sanitizers** distributed to its employees and contractual workers.
- ❖ **5,000 food grain packets** worth Rs. 23.31 lakhs for stranded migrant families along with sanitisation in nearby villages
- ❖ Toilet-washroom enabled **Porta Cabins** worth **Rs.18.63 lakhs** at Covid-19 isolation facility in Sambalpur.
- ❖ MCL Paramedics also made **in-house hand sanitizers** during the crisis of availability of sanitizers.



MCL 'S WAR AGAINST COVID -19



MoU SIGNING BETWEEN MCL, SUM HOSPITAL AND GoO FOR COVID HOSPITAL AT TALCHER



SANITATION DRIVE AT BASUNDHARA



DISTRIBUTION OF MASKS TO VILLAGE SARPANCHS



HANDING OVER OF MASKS AT ANGANWADIS FOR FURTHER DISTRIBUTION



DISTRIBUTION OF MASK AND SANITISERS IN VILLAGES



VILLAGERS WEARING MASKS AFTER MCL'S MASK DISTRIBUTION AND SANITATION DRIVE



PRODUCTION DIVISION

- ❖ MCL successfully implemented **3 DTLS** in major areas of MCL like Lakhanpur, IB-Valley, Lingaraj & Kaniha for Coal & OB Measurement.
- ❖ **Drone Survey** in major mines of MCL for OBR measurement will be done by CMPDI.
- ❖ Micro level monitoring of Tippers in conjunction with IED Department & also Tipper Control App "**Col Traffik**" which is ready to hoist.





MARKETING AND SALES DIVISION

- **Lingaraj SILO** (5th Feb' 20) commissioned and operationalized.
- **Additional quantity** of coal released to M/s NALCO through self-transportation mode via Bharatpur CHP.
- **First come First serve** system has been implemented for the first time in MCL History for road sale dala body transportation trucks w.e.f 5.12.19.
- New Lingraj SILO allocated to NTPC for lifting of 16,000 Te/day additional coal.
- Start of coal production and offtake at **Manoharpur mine (OCPL)** due to facilitation of dispatch by MCL. MCL received coal at Kanika to the tune of **0.51 MT** and paid about **Rs.84 Crs.**
- MCL offered 32 MT of coal under various e-auctions schemes in FY 2019-20 out of which **16 MT** was offered under SFEA.
- Commissioning of **16 New 100 tonnes static road weigh bridges.**



CHHARLA MGR SIDING STARTED

- ❖ Chharla OPGC MGR Siding inaugurated on 19th June'19.
- ❖ It facilitated dismantling of Ubuda Siding by OPGC which was situated over Coal Bearing area and Coal coal could be extracted from this area by Belpahar OCP
- ❖ 25,000 to 30,000 te/day can be transported through Chharla Siding.



CMD MCL INAGURATES CHHARLA SIDING





CIVIL WORKS



50 BEDDED HOSPITAL AT BASUNDHARA AREA



50 BEDDED HOSPITAL AT LAKHANPUR AREA



DIVERSION ROAD OF KULDA OCP



CONNECTING LINGARAJ SILO WITH TALCHER MAIN LINE AND NTPC CAPTIVE LINE, TCF



NEW COAL CORRIDOR ROAD AT HINGULA AREA



EXCAVATION DIVISION

- ❖ Procurement and deployment of **Surface Miner in record time** i.e. within **6 days** at Garjanbahal OCP.
- ❖ Drastically reduced mismatch of Digging & Transportation capacity by **Surveying off of 166 HEMMs** and **Grounding off 78 HEMMs**.
- ❖ Erection and commissioning of **24 nos. 410 HP Dozers** and **14 nos. 28 KL Water Sprinklers** done within a very short period of **03 months** .
- ❖ Commissioning of **03 nos. Electro – Mechanical Multi Axial (Pitch and Yaw) Swivel Control Nozzle** in **28 KL BEML Water Sprinkler**.
- ❖ Increase in Burnt oil recovery from **25.3 %** to **28.83 %**.





E&M DIVISION

1. Solar Plant 2 MWp :

- ❖ **22 lakh units** electricity generated.
- ❖ **9.65 Million kgs** carbon footprints reduction.
- ❖ Saving of Rs. **28.92 lakhs**.

2 MWp Solar Power Plant at Burla



Lingaraj SILO (20 MTPA- Peak Capacity)



2. Lingaraj SILO system of 20 MTPA commissioned.

Bharatpur SILO (20 MTPA- Peak Capacity)



3. 36.4 Crores of items procured from MSE i.e. 200 % achievement of MoU Target.



E&M DIVISION : CARE FOR ENVIRONMENT



TRUCK MOUNTED FOG CANON AT LAKHANPUR AREA



MIST BLOWERS AT BASUNDHARA AREA



MECHANICAL ROAD SWEEPER AT BASUNDHARA OCP



NEW WHEEL WASHING SYSTEM AT JAGANNATH OCP



ENVIRONMENT DIVISION

- **CTO** was obtained for **all the operating mines** for the year 2020-21.
- About **51,870 Trees** planted while **30,127 saplings** were distributed. Total Plantation > **60 Lakh**.
- To promote environmentally sustainable coal mining a '**Sustainable Development Cell**' (SDC) is constituted at MCL Level under Director Technical (Project & Planning), MCL.
- 50 m length Vertical Greenery System has been constructed at Siding no. 3 of Lakhanpur OCP.





FORESTRY AND ENVIRONMENTAL CLEARANCES



01

Achieving thematic expenditure target: MCL has spent 71% on thematic areas.

02

Contribution to Aspirational districts: MCL approved projects worth 10.15 Crs. in the thematic area.

03

Project 'MANTRA' with 'Gram Vikas : Aims to provide Toilet & Bathrooms with piped water supply for 364 households in 5 villages of Jharsuguda and Sundargarh district.

04

Project 'CCDP-Utthan' with 'BAIF': It is a 5-year sustainable livelihood project of 20 Cr focussing on agro-horti development and cattle rearing programme.

05

Completion of Medical College: The year witnessed completion of the construction of Medical College cum Hospital at Talcher- the 492 Cr flagship CSR project of MCL.

06

Toilet blocks in circulating areas of railways stations: MoU with RITES & East Cost Railways for installation of prefab toilet complexes in of 232 Railway stations of Odisha.

CSR AT A GLANCE



MEDICAL COLLEGE IN TALCHER, 492 CRs



PROJECT CCDP WITH UTTAN



MCL SIGNS MOU WITH E.CO.RAIL & RITES FOR PREFAB TOILETS



PROJECT MANTRA WITH GRAM VIKAS



DISTRIBUTION OF SOLAR LANTERNS AFTER FANI



MCL DESPATCHED 2500 TARPOLINES TO FANI AFFECTED PURI.

CSR AT A GLANCE



LAUNCHING OF 40 SUCCESS STORIES OF CSR



SWACHHTA AWARENESS THROUGH PLAYS IN LOCAL VILLAGES



ROPE-WAY AT GANDHI MINAR, HIRAKUD DAM



DISTRIBUTION OF SANITARY NAPKINS BY MAHILA MANDAL



SWACHHTA AWARENESS CAMPAIGN IN SCHOOLS



SWACHHTA AWARENESS CAMPAIGN



FINANCE DIVISION

1 Highest ever Interim dividend Rs.5,255 Crs and Dividend distribution tax of Rs. 1,074 Crs.

2 Settlement of pending Income tax disputes of Rs.142.23 Cr under Vivaad Se Viswas Scheme.

3 Highest ever advance income tax paid of Rs.4,300 cr against last year payment of Rs. 3,100 Crs

4 Rs. 3,000 Crores towards extraordinary payment for Upfront Advance Income Tax, Royalty, Incremental Dividend, etc.

5 GST Audit for the Financial Year 2017-18 completed and GSTR 9 & GSTR 9C return has been filed on 29th Jan'2020.

6 Centralized Payment of Salary & wages through CMP (Cash Management Product) implemented. resulted in timely payment and utilization of idle fund.

7 Receipt of e auction proceeds through ICICI Bank sales portal and integration with Coalnet

8 Implementation of uniform Programme for the coal net of income tax for the company as a whole.

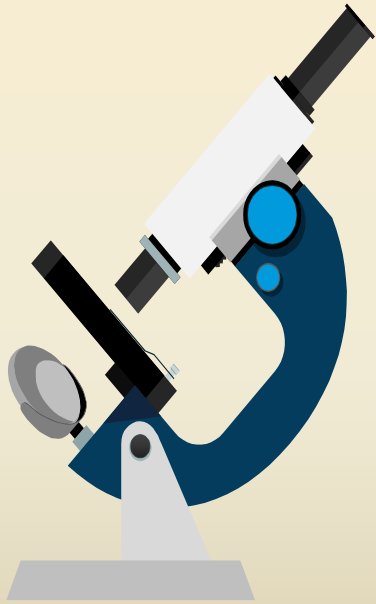
9 On-line CPRMSE Module "ARPAN".

10 A centralized programme for PLRS for the company as a whole.

11 Integration of all Coalnet servers at different fields into centralized server which helps to view of all financial transactions of areas for review at HQ.

12 Uniform program for Up-keep allowance in respect of Non-Ex and housing perquisite in respect of Executive for MCL as a whole implemented

QUALITY CONTROL



**THIRD PARTY SAMPLING
COVERAGE INCREASES
BY 24 % W.R.T LAST YEAR**

**70% OF SAMPLED COAL
IN MCL IS WITHIN AND
ABOVE THE DECLARED
GRADE.**

**ONE MORE LABORATORY
READY FOR NABL
ACCREDITATION**

**GRADE RECONCILIATION
OF ALL MAJOR POWER
CONSUMERS COMPLETED**

**100 COAL QUALITY
MEETINGS FOR
AWARENESS AND
INCLUSIVENESS**

**SAMPLE PREPARATION
FACILITIES INCREASED
BY 100%: 28 Nos.**



WELFARE DIVISION

Employees Benevolent Fund Scheme (EBFS) claim settlement – 106 Nos.



Financial Assistance of about 1 Cr to various employees & outside organization for undertaking recreational & social activities



CIL Scholarship of Rs. About 9 lakhs to 551 employees' wards



Issue of Contributory Post Retirement Medicare Scheme for Executives (CPRMSE) Card – 83 Nos.



Hon'ble Minister addressing the gathering on **7th November 2019** during Foundation Stone Laying for setting up of a **State of the Art new DAV School** at Lingaraj Area in Talecher coalfields.



WELFARE DIVISION : SPORTS AND GAMES



RUNNERS UP IN TEAM TENNIS TOURNAMENT IN CIL COMPANY SPORTS

MS. KAMLINI NAIK BECAME CHAMPION IN INDIVIDUAL EVENT IN CIL COMPANY SPORTS

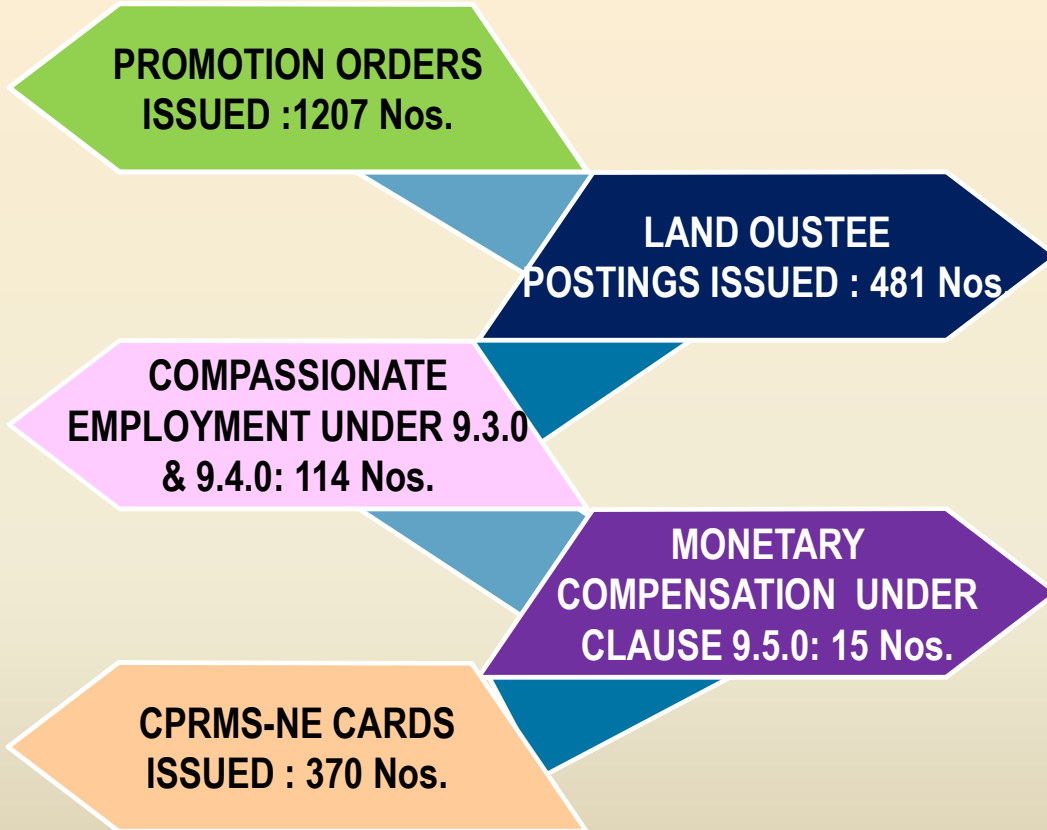


RUNNERS-UP IN TEAM BADMINTON TOURNAMENT IN CIL COMPANY SPORTS

RUNNERS-UP IN HOCKEY IN CIL COMPANY SPORTS



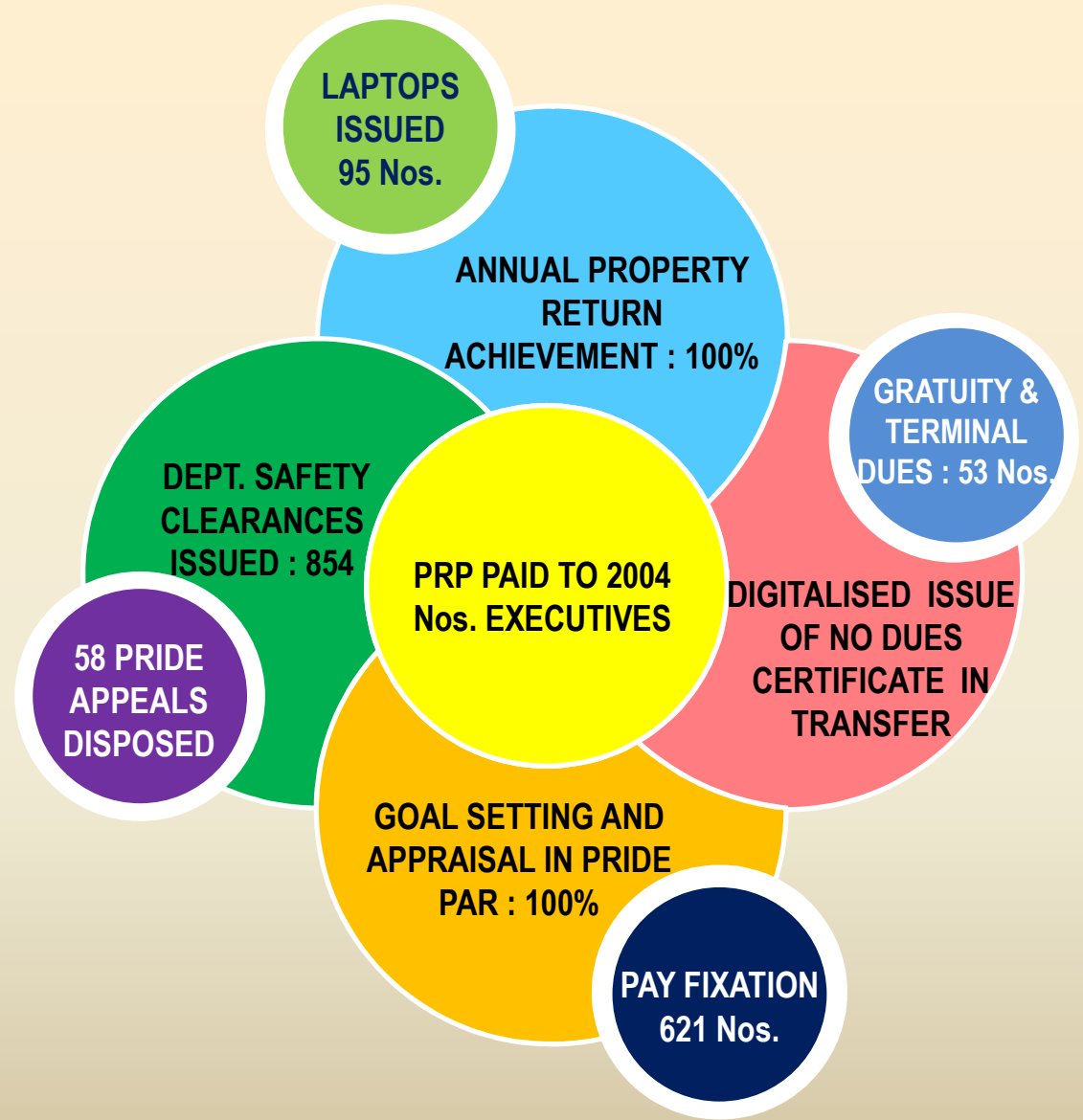
CHAMPION AT ALL INDIA PUBLIC SECTOR GOLF TOURNAMENT



PERSONNEL AND INDUSTRIAL RELATIONS



EXECUTIVE ESTABLISHMENT





SYSTEMS DIVISION

LAUNCHING OF MCL INTRANET PORTAL AS KNOWLEDGE MANAGEMENT SYSTEM

MAJOR IMPROVEMENTS IN COALNET MODULES IN SALES, FINANCE AND CPRSME

MCL SAMBALAN APP FOR EMPLOYEES PAYSALIP, PF AND PENSION DETAILS

COAL TRAFFIK CONTROL APP FOR MONITORING DEPLOYMENT OF TIPPERS

DEVELOPMENT OF WEBPAGE OF CSR ACHIEVEMENTS NAMED MCL CSR PORTAL

INSTALLATION OF WEB SERVER AT MCL WHICH WAS PREVIOUSLY HOSTED AT CMPDIL SERVER





ELECTRONICS AND TELECOMMUNICATION

- 1** Improvement in GPS/GPRS tracking by Screenshot capture of every Mine Geofence violation.
- 2** Work Order placed upon M/s Railtel for providing 100 MBps Internet Connectivity at 284 locations
- 3** Extension of E-Office link to all Areas, Projects and other locations having CoalNet Connectivity.
- 4** Full CCTV Coverage Availability at Sidings which has increased from 60 % to 100 %.
- 5** Provision of DTH Services with more than 700 connections at the residence of staff and executives of MCL HQ.
- 6** Enterprise grade Video Conferencing System has been installed at MCL HQ, Sambalpur and MCL Office, BBSR.

1

Quashing of Demand Notices raised by DDMs to the tune of Rs. 8297 Crores

2

Stay order against the Demand Notices raised by DDMs to the tune of Rs.- 60 Crores

3

Introduction of online platform module such as PROVAKIL for proactive monitoring of cases

4

Empanelment of 19 New Advocates and Upgradation of 24 Paneled Advocates in Higher and Lower courts

5

High disposal rate of Court Cases despite strikes of Bar Association : 74.5 % which is 43 % higher than FY 18-19



LEGAL DIVISION

HINGULA WASHERY 10 MTPA

- Process of receipt of Amended EC after submission of Mine plan in the next EAC meeting.
- LoA to be issued to L-1 after Amended EC, CTE and Statutory Clearances

JAGANNATH WASHERY 10 MTPA

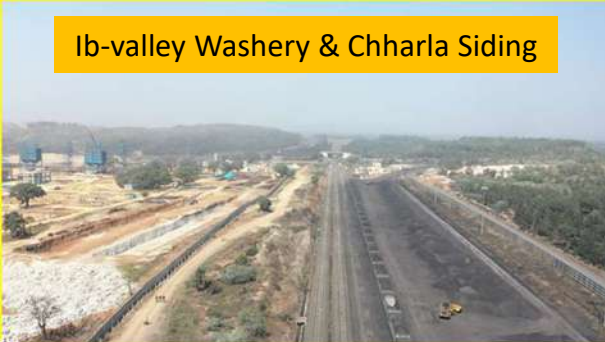
- Amended EC received on 24th Feb'20.
- LOA to be issued after CTE (Advanced stage) and Statutory Clearances.

WASHERY DIVISION

IB VALLEY WASHERY 10 MTPA

- Total 50 % Completion till March'20

Ib-valley Washery & Chharla Siding



BASUNDHARA WASHERY 10 MTPA

- Stage – 1 FC obtained on 11.3.19.
- EC obtained on 31.10.2019.
- Bid Validity not extended hence LoA cancelled.

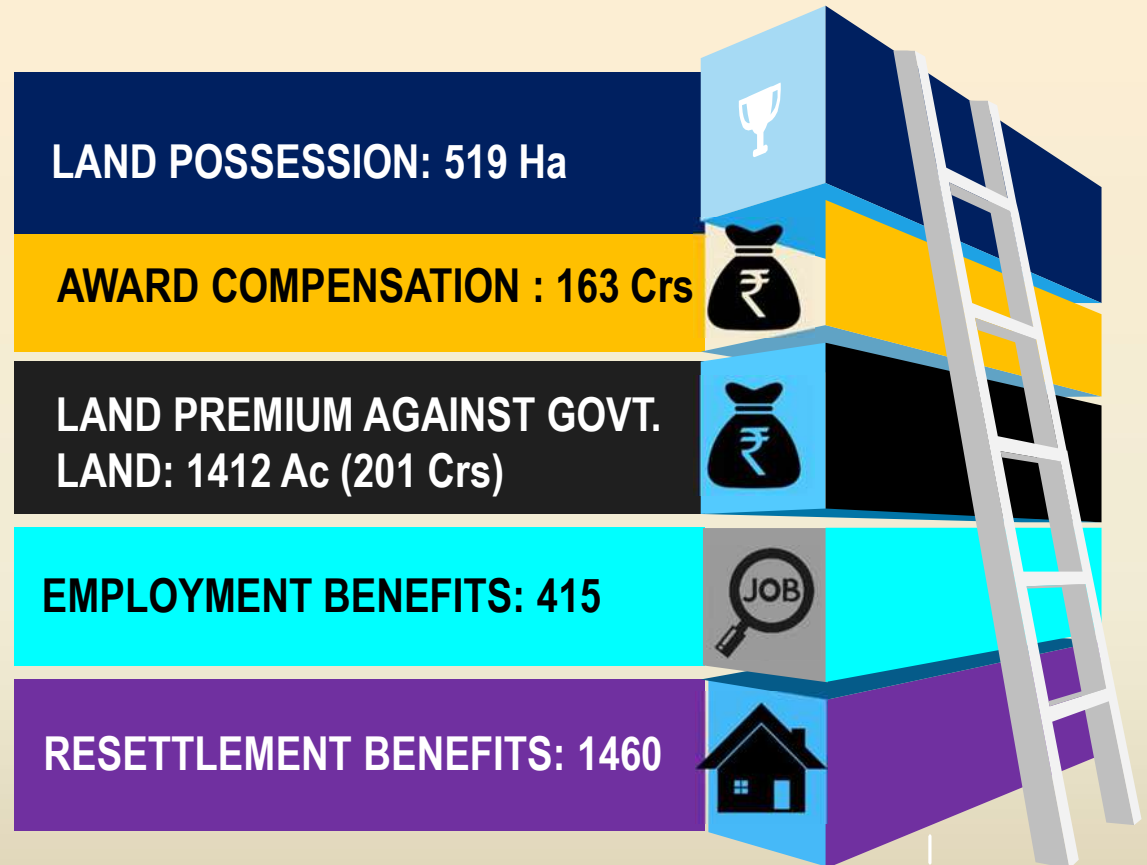
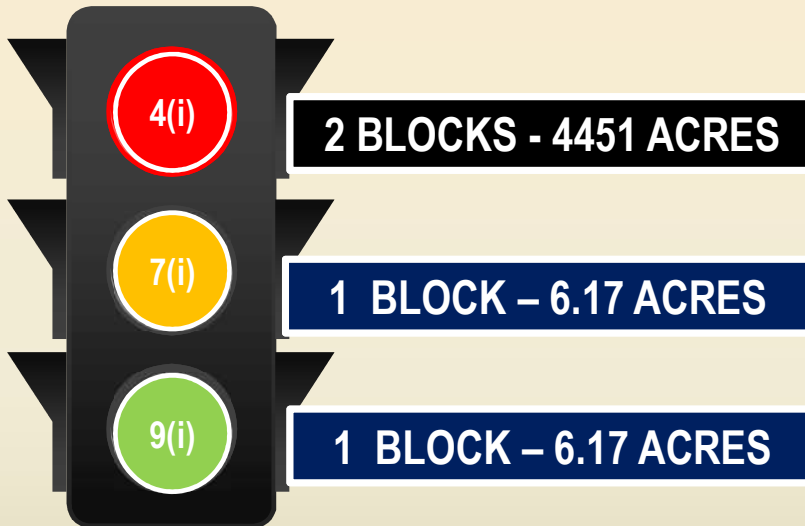


SAFETY DIVISION

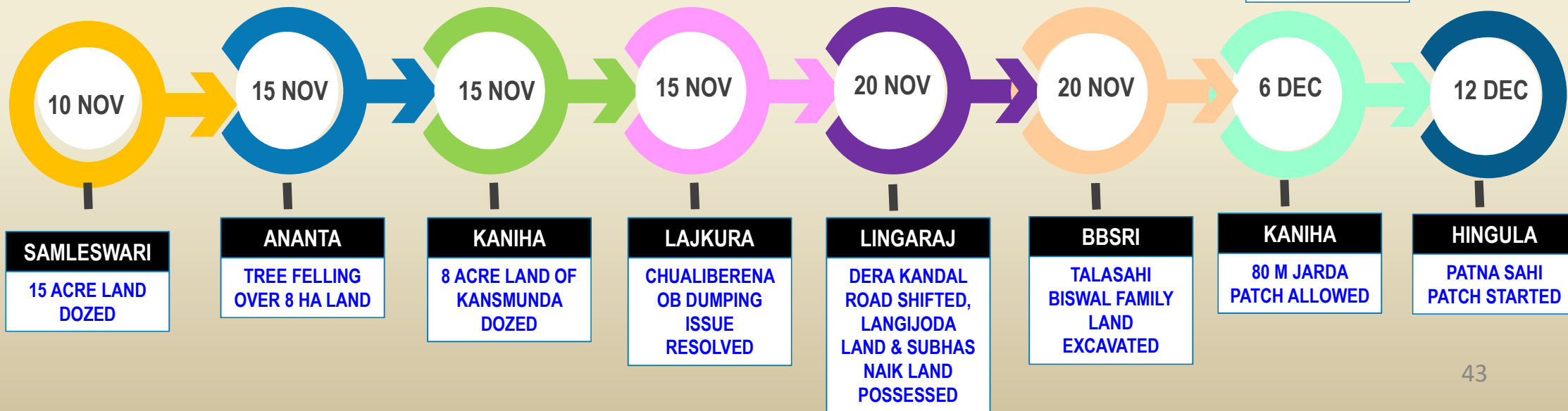
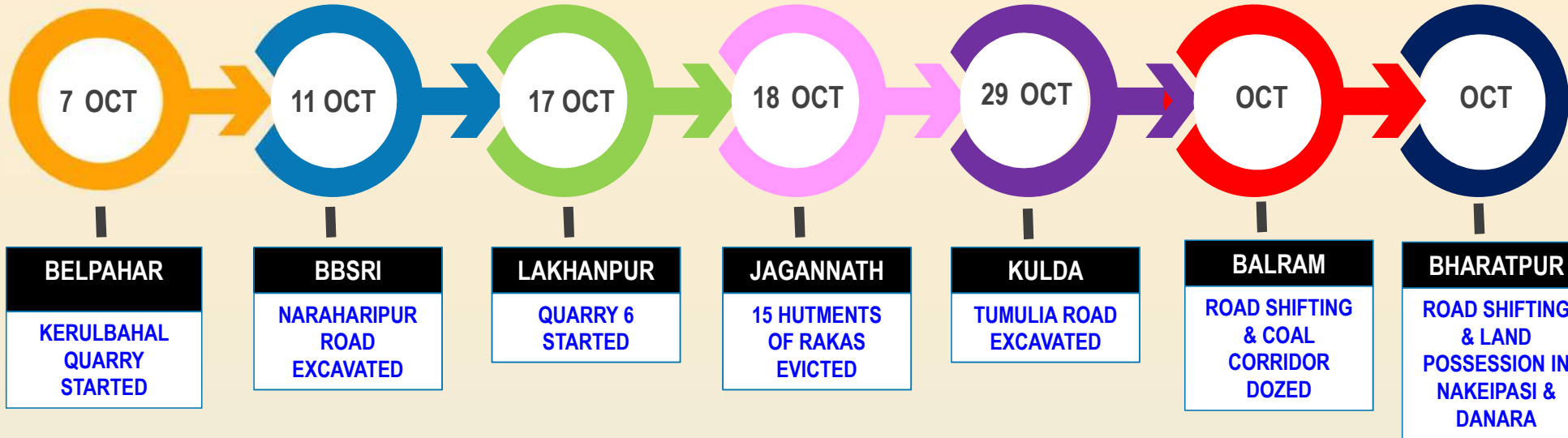
- 1 Inter Area Safety Audit of all mines conducted.
- 2 25th Zonal and 50th All India Mines Rescue competition conducted.
- 3 Scientific study of all Opencast Mines conducted as per CMR 2017.
- 4 Animated film prepared on Accident of Strata failure of Bharatpur OCP.
- 5 Simulator Training of 28 Dumper Operators at Singrauli, NCL.
- 6 Procurement, Installation & commissioning of Gas Chromatograph in each field
- 7 Procurement of LED cap lamps : 130 nos.
- 8 Procurement of PDS : 37 nos.
- 9 Appointment of Electrical safety officers in all projects completed
- 10 3D TLS survey for dump stability and mine geometry completed for IB Valley and BG Area

LAND AND REHABILITATION DIVISION

LAND ACQUISITION NOTIFICATIONS u/s



CHRONOLOGY OF MAJOR LAND POSSESSION IN FY 19:20



LAND & REHABILITATION : OTHER HIGHLIGHTS

**6 LAKHS TO SUKHBASI
FAMILY AND ADDITIONAL
INCENTIVE OF RS. 2 LAKHS
TO EACH FAMILY**

**RS. 10 LAKHS ADDITIONAL
CASH COMPENSATION
IN LIEU OF RESETTLEMENT
PLOT SUBJECT TO SHIFTING OF
ENTIRE VILLAGE AT A TIME**

**ANNUITY INCREASE FROM
RS. 12,000 /MONTH TO RS.
21,000/MONTH WITH
BIENNIAL INCREMENT OF
RS 1,000 TILL 60 YEARS**

**NO MAJOR STRIKES AND
BANDHS FROM NOV '19 TO
MARCH '20 AFTER RESOLVING
MAJOR LAND ISSUES**



CONTRACT MANAGEMENT CELL

SURFACE MINER PERFORMANCE ANALYSIS: 2019-20

	Extraction Contracts				Composite Contracts				Departmental			Grand total		
	Name of contractor	Awarded TPD	Actual 2019-20	% Achv	Name of contractor	Awarded TPD	Actual 2019-20	% Achv	Capacity	Actual 2019-20	% Achv	Capacity	Actual	% Achv
Jagannath *		2400	2400	100%								2400	2400	100%
Ananta	Sainik	13258	14430	108.8%	JRT	31780	6729	21.2%	6000	5316	89%	51038	26475	51.9%
Bhubaneswari					BCML	76503	76503	100.0%				76503	76503	100.0%
Bharatpur					SICAL	34521	4349	12.6%				34521	4349	12.6%
Lingraj					VFPL	34216	16065	47.0%	28270	18221	64%	62486	34286	54.9%
Kaniha					VFPL	46027	20583	44.7%				46027	20583	44.7%
Hingula					SICAL	24406	6335	26.0%	24070	12459	51.8%	48476	18794	38.8%
Balram									23630	13797	58%	23630	13797	58.4%
Lajkura					VFPL	12867	7460	58.0%				12867	7460	58.0%
Samaleswari					VFPL	25969	3879	14.9%	8860	8785	99.2%	34829	12664	36.4%
Belpahar	Sainik	11739	18260	155.5%					2000	1334	66.7%	13739	19594	142.6%
Lakhanpur	Sainik	23925	37859	158.2%	VFPL	21057	12840	61.0%	7860	5701	72.5%	52842	56400	106.7%
Bas(W)									5300	4826	91.1%	5300	4826	91.1%
Kulda	Chennai Radha	25892	26244	101.4%	VFPL	19309	10757	55.7%	8020	2034	25.4%	53221	39035	73.3%
Grajanbahal **	VFPL	28228	23170	82.1%					18600	14559	78.3%	46828	37729	80.6%
Total		1,05,442	1,22,363	116.0%		3,26,655	1,65,500	50.7%	1,32,610	87032	65.6%	5,64,707	3,74,895	66.4%

Note: (1) One departmental L&T 303 damaged in accident at SML. (2) Out of 04 SM of JRT 01 running on Sainik account, 02 in Face & 01 L&T BD. (3) Grand total SM 63, Wirtgen 42, Puzzolana 02 & L&T 19.

* Surface Miner extraction quantity diverted from Ananta in March 2020.

** Surface Miner quantity diverted from Bharatpur in December 2019.



CONTRACT MANAGEMENT CELL

OBR PERFORMANCE ANALYSIS 2019-20

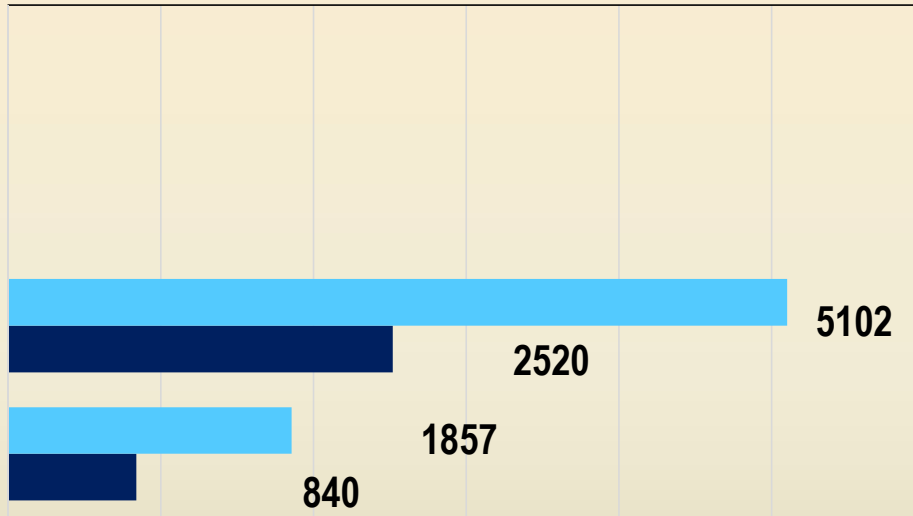
NAME OF PROJECT	CONTL TPD	DEPTL TPD	TOTAL TPD	NAME OF CONTRACTOR	CONTL ACHV	% ACHV	DEPTL ACHV	% ACHV	TOTAL ACHV
Jagannath	10734	12820	23554	SRG, Kolkata	3853	36%	4914	38%	8767
Ananta	45945	14820	60765	Triveni	31556	69%	3618	24%	35174
Bhubaneswari	61400		61400	BCML	41163	67%			41163
Bharatpur	22142	19640	41782	BLA	11065	50%	6729	34%	17794
Lingaraj	21890	13370	35260	OSL	23400	107%	6085	46%	29485
	19123		19123	OSL	12584	66%			12584
Sub-Total	41013	13370	54383		35984	88%			35984
Kaniha	37808		37808	JRT	9970	26%			9970
Hingula	26922	8110	35032	OSL	10771	40%	2551	31%	13322
Balram	34247	22500	56747	Mahalaxmi	20870	61%	7007	31%	27877
Lajkura	29151	10620	39771	SICAL	9118	31%	2587	24%	11705
Samleswari	59726	11950	71676	Dilip Buildcon	8527	14%	2829	24%	11356
Belpahar	33394	9290	42684	BLA	16582	50%	2206	24%	18788
Lakhanpur	58438	14000	72438	BGR	34265	59%	7990	57%	42255
	64402		64402	VPR	43874	68%			43874
Sub-Total	122840	14000	136840		78139	64%			78139
Basundhara (W)		3770	3770				505	13%	
Kulda	45912		45912	Hiltop Highrise	25770	56%			25770
Garjanbahal	17087	12080	29167	VFPL	11128	65%	4040	33%	15168
Total	5,88,321	1,52,970	741291		3,14,496	53%	51,061	33%	3,65,557

Note: Jagannath OB started on 11.01.2020, Samleswari OBR stopped from 12 June 2019, resumed on 15 December 2019, Garjanbahal outsourcing OBR started from 10 December 2019, Lajkura outsourcing OBR of M/s. SICAL terminated on 27 November 2019 and limited tender by BGR started on 12 March 2020.

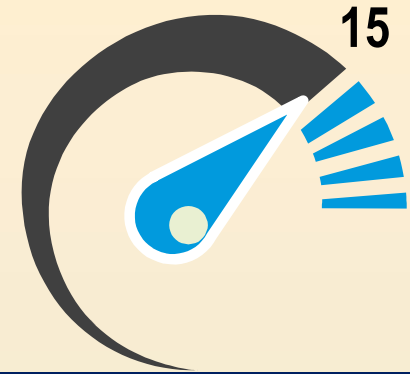
MANAGEMENT TRAINING INSTITUTE



0 1000 2000 3000 4000 5000 6000



■ ACHIEVED
■ TARGET



FEMALE EMPOWERMENT TRAINING PROGRAMS

SPECIAL WORKSHOPS ON THE TOPICS (COAL PRODUCTION, OBR, DESPATCH, OFFTAKE REPORTING & RECONCILIATION; PURCHASE MANUAL; CONTRACT MANAGEMENT; R&R POLICY; E- PROCUREMENT) CONDUCTED.



**FEMALE
EMPOWERMENT
PROGRAMS**





HRD DIVISION

ADDITIONAL 50 SEATS FOR PDPT TRAINING FOR WARDS OF EMPLOYEES AND PAPS UNDER NATS HAS BEEN APPROVED.

TALENT MANGEMENT AND CAREER PROGRESSION

TARGET : 90
ACHIEVEMENT : 107

APPROVAL FOR TRAINING OF NEWLY APPOINTED CAT-1 EMPLOYEES FOR HEAVY MOTOR VEHICLE DRIVING LICENSE. NOTIFICATION PUBLISHED

IMPARTING TRAINING UNDER APPRENTICE ACT, 1961 (AMMENDED 2016)

TOTAL : 984 Nos.



RAJBHASA DIVISION

RAJBHASA WORKSHOPS AND UNICODE TRAINING CONDUCTED AT MTI – SAMBALPUR, BTI – LAKHANPUR AND MEETI, CWS TALCHER.



HINDI DAY / RAJBHASA PAKHWADA AND ALL INDIA HINDI POET'S CONFERENCE CONDUCTED FROM 14TH TO 28TH SEPTEMBER. SEVERAL COMPETITIONS WERE ORGANIZED AND PRIZES DISTRIBUTED FOR PROMOTION OF RAJBHASA IN MCL



AWARDS AND ACCOLADES



AWARDS AND ACCOLADES



MCL WON THE NATIONAL CSR AWARD INSTITUTED BY THE MINISTRY OF CORPORATE AFFAIRS FOR CONTRIBUTION TO NATIONAL PRIORITY AREAS OF HEALTH, DRINKING WATER & SANITATION.

AWARDS AND ACCOLADES



MCL WON THE “BEST ENTERPRISE AWARD” FIRST PRIZE IN MINI-RATNA CATEGORY FOR WOMEN IN PUBLIC SECTOR.

AWARDS AND ACCOLADES



MCL WAS AWARDED FIRST PRIZE IN ENVIRONMENTAL MANAGEMENT AMONG SUBSIDIARIES FOR THE YEAR 2018-19, GIVEN DURING THE CIL FOUNDATION DAY CEREMONY HELD ON 01-11-2019.

AWARDS AND ACCOLADES



MCL WON 2 GREENTECH ENVIRONMENTAL AWARDS FOR ANANTA OCP AND BASUNDHARA OCP AT 18TH ANNUAL SUSTAINABILITY CONFERENCE 2019 OF GREENTECH FOUNDATION AT NEW DELHI

AWARDS AND ACCOLADES



MAHANADI COALFIELDS LIMITED HAS BEEN CONFERRED WITH THE CORPORATE AWARD ON CSR BY COAL INDIA LIMITED FOR BEING THE HIGHEST SPENDER IN CSR AMONG ALL SUBSIDIARIES OF CIL IN THE FY 2018-19

AWARDS AND ACCOLADES



ROURKELA SPORTS ASSOCIATION HAS PRESENTED "SPORTS PROMOTION EXCELLENCE AWARD-2019" IN RECOGNITION TO OUR CONTRIBUTION TOWARDS PROMOTION OF SPORTS IN ODISHA

AWARDS AND ACCOLADES



MCL WAS AWARDED FOR "EXEMPLARY EXHIBIT" SHOWCASING OPEN CAST COAL MINING OPERATIONS THROUGH WORKING MODELS OF HEMMS AT 8TH BHOPAL VIGYAN MELA.

AWARDS AND ACCOLADES



MCL HAS BEEN FELICITATED WITH AWARD OF EXCELLENCE IN CPSE CATEGORY IN THE AUGUST OCCASION OF "ODISHA MSME INTERNATIONAL TRADE FAIR - 2020"

AWARDS AND ACCOLADES



MCL WON THE OFFICIAL LANGUAGE SHIELD OF TOWN OFFICIAL LANGUAGE IMPLEMENTATION COMMITTEE, SAMBALPUR





Spreading Smiles & Energizing Lives



MISSION:

" To produce and market the planned quantity of coal and coal products efficiently and economically in an eco-friendly manner with due regard to safety, conservation and quality" "

THANK YOU